

Table of Contents

PRESIDENT'S CORNER.....	2
MEETING NOTES.....	3
AREA NEWS	5
Shrine Hambash	5
W5YI Test Session.....	5
CLUB PROJECTS	6
Elmer newly minted Hams	6
EDUCATION	7
Cabrillo File	7
TECHNICAL.....	9
RF Probe	9
SPECIAL EVENTS	10
W0UK/Portable.....	10
Ham Radio Terms.....	11
Solution.....	12
CONTESTING	13
TECHNICAL DEMOS	14
CONTACTS	15
REPEATERS & NETS	16
ARES Net	16
Club Net.....	16
MEETINGS	17
Tuesdays	17
Saturdays	17
2 nd Wednesday	17
HAM CLASSES	18
MEMBERSHIP APPLICATION	19
COPYRIGHT	20

PRESIDENT'S CORNER

By Jim Eckler – KC0IDF



Tonight's meeting started like all meeting do, by setting up tables and chairs. As the meeting got underway, I looked around and I believe we had somewhere in the neighborhood of about 30 hams attending. I want to thank everyone for coming. I notice we also had some new faces in the group.

During the social time before the meeting got started, I was able to meet some of the new hams in the group, and even collect some dues. We had about 4 new members sign-up. I hope I inspired them to become interested in Ham radio.

I know the direction of the club is important to me; however, I need your input on what direction you'd like to see the club go. If you have any suggestions, please email your suggestion to any of the officers.

Let's have another great year immersed in the wonderful hobby of Ham radio. And, remember, it's important to Mentor the new Hams and get them on-the-air.

I wish to Thank Jim Cessna for volunteering to do the newsletter.

73,
Jim

MEETING NOTES

By Jim Cessna – AC0KN



March 8, 2017

MEETING TO ORDER:

The President, Jim Eckler, called the meeting to order. Introductions of attendees were made by name and call-sign.

SECRETARY-TREASURER REPORT:

Last month's Sec-Treasurer Report was read out loud to the group at the meeting. A motion was made to accept the minutes as read. It was voted on and passed.

If you haven't paid your dues, please do so immediately. Payment may be given to Bill Musick during the meeting, or, mailed to: Bill Musick 3916 Bob Billings Pkwy., Lawrence, Kansas 66049.

OLD BUSINESS

Repeater relocation

Discussion centered round possible new locations and elevation. It was suggested the repeater might be placed on top of West Middle School (Crestline/Harvard). Another suggestion would be to place the repeater atop a tall tower on the south end of Clinton Lake dam. Both had merits and problems.

Meeting Presentation

April 12, 2017, Jim Cessna will provide the club's presentation titled, "Ensor Park and Museum". Marshal Ensor taught radio by radio, and received the William S. Paley award.

Special Event

Brandon Graham put forth a suggestion about having a special event and operate as "FD Portable" [W0UK/P] at Wells Overlook on April 1, 2017 from 9 am to 2 pm. It will give everyone a chance to operate using only batteries. Brandon will try out his newly-built home brewed antenna. Bring your own water and sandwiches.

Rusty Rig

Larry Shambaugh brought in his really old rusty rig and several very old QSTs (circa 1930's). If you are interested in giving the rusty rig a new home along with the QSTs, please contact Larry at LShamb3315@cs.com for the hand-off.

Morse code Presentation

Morse code presentations are being held every Friday from 12:00-13:00, at the Lawrence library. The presentations are being held in conference room “C” at the bottom of the stairs.

Field Day

A lively discussion regarding Field Day resulted in having three stations; SSB, CW, and DIG, which means we will be in the “3A KS” category.

Our FD location will be at Wells Overlook.

FD coordinators will be Phil Anderson, along with Ken and Virginia Filardo.

The meal situation was discussed briefly. Saturday evening dinner will be pot-luck. Saturday Lunch and Sunday brunch is under further consideration.

Education during FD was brought-up. Several suggestions involving the family and/or social activities were mentioned and floated for consideration. Suggestions should be emailed to the FD coordinators.

An “Information Table” was mentioned and agreed to have one set up.

The 2017 Field Day packet of information is available. In the packet is “Press Releases” information, which should go to Lawrence Journal World, and any other publications deemed appropriate. Of course, now is the time to invite elected officials and ARRL officers to our FD site.

Ararat Shriner’s Hambash

April 15, 2017 is the Ararat Shriner’s Hambash.

NEW BUSINESS:

Elmering

Several members of the club brought up the critical need for Elmering. A possible “Next step” after getting their Technician License, would be for the club to mentor the newly minted Ham enabling them to get on-the-air. If you have an extra antenna to loan or offer them some time on your rig.

ADJOURN:

A motion was made and seconded to adjourn the meeting. Meeting was adjourned.

AREA NEWS



Shrine Hambash

PLACE: Ararat Shrine Temple
5100 Ararat Drive
Kansas City, Mo. 64129

DATE: April 15, 2017

TIME: 08:00-13:00



TICKETS: \$5 each at the door – 3 tickets for \$10 in advance.

W5YI Test Session

The W5YI group does testing in the rooms on the 2nd floor from 9:00-11:00 am. So if you know of someone who is ready to test ... go for it ... at the Hambash. Contact: Jim Lee at jimlee@kc.rr.com to register to test.

CLUB PROJECTS

Elmer newly minted Hams

By Jim Cessna – AC0KN

If Tim Allen (Last Man Standing) can be an Elmer to “Boyd”, the Douglas County Amateur Radio Club can be an Elmer to newly minted Hams! And, to not-so-newly-minted Hams, that can use a little guidance here and there. Make it a point to Elmer someone in need!



Did you know every cast member on Last Man Standing has their Amateur Radio License? It's true. The “basement shack” on the set of Last Man Standing is a real working station. During their evening breaks, some of the cast members will make QSOs with the rest of the world. Their call is KA6LMS. Check out their QSL card below. For more information look up KA6LMS on QRZ.com.



EDUCATION



Cabrillo File

By Jim Cessna – AC0KN

The Cabrillo file format is laid out different than the ADIF file, but contains the same information. The Cabrillo file format is laid out so it is easier to visually read. It still has Header information and then multiple QSO records just like the ADIF file. This information was copied from the ARRL database information. The database contains multiple other mode templates not shown here. I only copied the CW template. For more information, please see www.arrl.org web site.

CW TEMPLATE

Single Op Low Power CW (Precedence “A”: 150 watts or less)

START-OF-LOG: 3.0

CONTEST: ARRL-SS-CW

CALLSIGN: W1AW

LOCATION: CT

CLUB: ARRL

OPERATORS: W1AW

CATEGORY-OPERATOR: SINGLE-OP

CATEGORY-TRANSMITTER: ONE

CATEGORY-ASSISTED: NON-ASSISTED

CATEGORY-BAND: ALL

CATEGORY-POWER: LOW

CATEGORY-MODE: CW

CATEGORY-STATION: FIXED

CLUB: ARRL

NAME: Hiram Maxim

ADDRESS: 225 Main St.

ADDRESS: Newington, CT 06111

QSO DATA TEMPLATE:

Guide:	A	B	C	D	E	F	G	H	I	J	K	L	M	N
QSO:	14000	CW	2009-11-07	2100	W1AW	1	M	38	CT	K8MM	1	Q	92	MI
QSO:	14000	CW	2009-11-07	2101	W1AW	2	M	38	CT	K3TX	1	A	59	EPA
QSO:	14000	CW	2009-11-07	2104	W1AW	3	M	38	CT	W4DAN	1	A	77	TN
QSO:	14000	CW	2009-11-07	2106	W1AW	4	M	38	CT	K1BG	2	U	68	WMA
QSO:	14000	CW	2009-11-07	2106	W1AW	5	M	38	CT	K5AF	10	A	60	STX
END-OF-LOG:														

A= Operating frequency. Use the following generic abbreviations:

1800
3500
7000
14000
21000
28000

B= Mode. In the CW Sweepstakes, use CW; in the Phone Sweepstakes, use PH.

C= Date, in YYYY-MM-DD format. November 7, 2009 is typed as 2009-11-07.

D= Time, in UTC format.

E= Your call.

F= Your QSO #.

G= Your precedence.

H= Your check (the last two numbers of the year you were first licensed).

I= Your ARRL Section

J= The call of the station you worked.

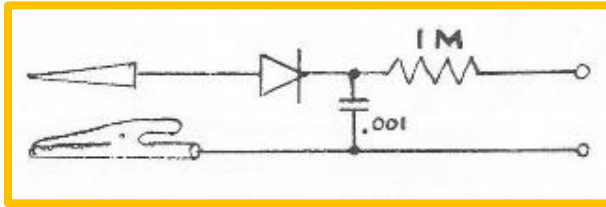
K= Their QSO number to you.

L= Their precedence.

M= Their check.

N = Their ARRL Section.

TECHNICAL



RF Probe

By Bob Heil – K9EID

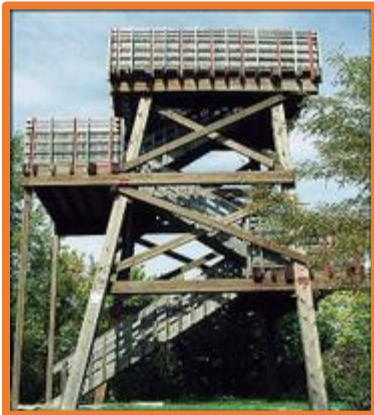
[Reprinted with permission of Bob Heil.]

When testing RF circuits, one of the handiest pieces of test equipment you can have is an RF probe. You can measure AC and DC voltages with your VTVM, of course, but should you want to check the output of an oscillator or mixer stage, the RF probe will rectify that RF and you can read it directly on your voltmeter. The RF probe could also be used to measure the actual power output of a transmitter. By referencing it to a specific load, you can then use the simple equation of:

$$E^2/R$$

If the transmitter output is fed into a 72 ohm known load and the voltage is 8.5 volts, then: $8.5 \times 8.5 = 72/72 = 1$ watt. The RF probe is simply a germanium or a pin diode would be better, a .001 uF capacitor and a high value resistor. You can use all types of housing. Things like old ballpoint pens, plastic tubes, or even an open thin piece of printed circuit board. Keep the leads as short as possible.

SPECIAL EVENTS



W0UK/Portable

By Jim Cessna – AC0KN

On April 1, 2017, DCARC will operate “W0UK/P” at Wells Overlook state park. We should arrive about 9 am and depart about 2 pm. Operate like we normally do at FD, but only run off batteries. It was suggested that Brandon Graham should operate a station using his newly built home-brewed antenna.

Brandon debuted his antenna (below) at our March 8, 2017 club meeting, but due to no power supply, was unable to make any on-the-air contacts. For more information about the antenna he built, view the complete write-up along with a how-to with pictures at <http://www.ad5x.com/images/Articles/VerticalRevH.pdf>.



Ham Radio Terms

M B M R L D D E P G G D P S W
J D E I E I I O W A N U E I J
R A N V P T O O D I I R R K M
S E N O E L E A D N T E I Y O
S E L A I R P M I E A S O V D
Z E R B L T A G M O N E D A N
Q O P A E O A G N A R R I C A
G P A R T Y G Z E K E E C U R
E L I B O M G D I I T P E U D
A N A L Y Z E R F R L M B M E
S A F E T Y X I L L A A U K L
F E E D F N L A T V O L T D T
R E N A L P D N U O R G O M A
Q J O L M T N E R R U C E P O
S U U A N T E N N A R E N U T

ADAPTER
ALTERNATING
AMMETER
AMPERES
AMPLIFIER
ANALOG
ANALYZER
ANTENNA
ARES
ATV
BEVERAGE
CURRENT
DELTA
DIODE
DIPOLE
FEED
GAIN
GROUND-PLANE
LINES
LOG
LOOP
MOBILE
PERIODIC
POLARIZATION
RANDOM
SAFETY
TRAP
TUBE
TUNER
VACUUM
WIRE
YAGI

Solution

+ B + R L D D + P G G + P + W
+ + E I E I I O + A N + E I +
+ A N V P T O O D I I + R + M
S E N O E L E A D N T E I + O
S E L A I R P M I E A S O V D
+ E R + L T A G M + N E D A N
+ + + A E O A G + A R R I C A
+ P A R T Y G Z E + E E C U R
E L I B O M + + I I T P E U D
A N A L Y Z E R F R L M B M E
S A F E T Y + I + L A A U + L
F E E D + + L A T V O L T + T
+ E N A L P D N U O R G O + A
+ + + + M T N E R R U C + P +
+ + + A N T E N N A R E N U T

(Over,Down,Direction)
ADAPTER(10,2,SW)
ALTERNATING(11,11,N)
AMMETER(10,7,NW)
AMPERES(12,11,N)
AMPLIFIER(4,15,NE)
ANALOG(2,3,SE)
ANALYZER(1,10,E)
ANTENNA(4,15,E)
ARES(4,7,NW)
ATV(8,12,E)
BEVERAGE(2,1,SE)
CURRENT(12,14,W)
DELTA(15,9,S)
DIODE(6,1,SE)
DIPOLE(7,1,SW)
FEED(1,12,E)
GAIN(10,1,S)
GROUND-PLANE(12,13,W)
LINES(5,1,SW)
LOG(10,11,SE)
LOOP(6,4,NE)
MOBILE(6,9,W)
PERIODIC(13,1,S)
POLARIZATION(14,14,NW)
RANDOM(15,8,N)
SAFETY(1,11,E)
TRAP(5,8,W)
TUBE(13,12,N)
TUNER(15,15,W)
VACUUM(14,5,S)
WIRE(15,1,SW)
YAGI(6,8,NE)

CONTESTING



Show me your shack!

Take a picture of your shack and it may be featured here with a short personal bio on your involvement in Ham radio.

[ARRL 2017-2018 Contest Dates](#) - Ver 1.0c, 17 Oct 2016

January 2017

- 1 [Straight Key Night](#)
- 7 [Kids Day](#)
- 7-8 [RTTY Roundup](#)
- 21-23 [January VHF](#)

March 2017

- 4-5 [International DX– Phone](#)

June 2017

- 10-12 [June VHF](#)
- 18 [Kids Day](#)
- 24-25 [Field Day](#)

August 2017

- 5-6 [222 MHz and Up Distance Contest](#)
- 19-20 [10 GHz & Up – Round 1](#)
- 20 [Rookie Roundup – RTTY](#)

October 2017

- 7-8 [EME - 50 to 1296 MHz](#)
- 16-20 [School Club Roundup](#)

December 2017

- 1-3 [160 Meter](#)
- 9-10 [10 Meter](#)
- 17 [Rookie Roundup–CW](#)

February 2017

- 13-17 [School Club Roundup](#)
- 18-19 [International DX – CW](#)

April 2017

- 16 [Rookie Roundup – Phone](#)

July 2017

- 8-9 [IARU HF World Championship](#)

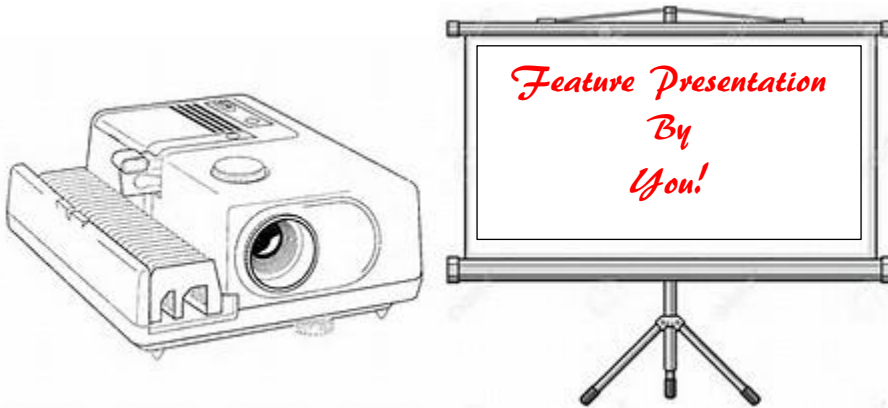
September 2017

- 9-10 [EME - 2.3 GHz & Up](#)
- 9-11 [September VHF](#)
- 16-17 [10 GHz & Up - Round 2](#)

November 2017

- 4-5 [EME - 50 to 1296 MHz](#)
- 4-6 [Nov. Sweepstakes – CW](#)
- 18-20 [Nov. Sweepstakes – Phone](#)

TECHNICAL DEMOS



2017			
DATE	SUBJECT	PRESENTER	EMAIL
1/11/17	Kit-Building		
2/08/17	Build Wire Antenna		
3/08/17	Satellite Tracking		
4/12/17	Ensor Park and Museum	Jim Cessna - AC0KN	jimrcessna@aol.com
5/10/17	MFJ Antenna Analyzer		
6/14/17	DX Engineering		
7/12/17	Band Plans & Sub Band Plans		
8/09/17	Keep Station Log		
9/13/17	IOTA-SOTA		
10/11/17	Ham Nation & Amateur Logic		
11/08/17	After Extra (GROL + RADAR)		
12/13/17	Christmas Party		

Here are some suggested topics for presentations. If you'd like to sign-up and present a topic to the group during our club meeting, please let Phil Anderson w0xiphil@gmail.com know.
Thanks for stepping up and supporting our club.

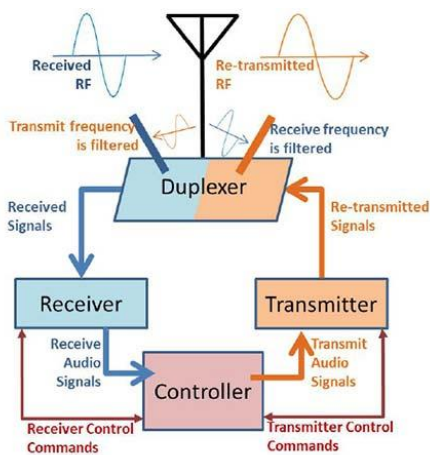
CONTACTS



PRESIDENT	Jim Eckler KC0IDF	kc0idf@arrl.net
VICE PRESIDENT	Brandon Graham W0GPR	kb3igc@arrl.net
SECRETARY	Kevin Oneslager KS0EGL	kevin@prometheusinc.net
TREASURER	Bill Musick KC0NFL	blackcat@sunflower.com
EMER MGMT CORD	Bill Musick KC0NFL	blackcat@sunflower.com
TRAINING MGR	Norman Mast NQ0C	norman.mast@gmail.com
WEB SITE	David Klamet KE0EFY	info@w0uk.com
PROGRAM MGR	Phil Anderson W0IX	w0xiphil@gmail.com
FIELD DAY	Ken Filardo KA0THK	ka0thk@arrl.net
HAM RADIO CLASSES	Phil Anderson W0IX	w0xiphil@gmail.com
ARES	Bill Musick KC0NFL	blackcat@sunflower.com
REPEATER	Bill Musick KC0NFL	blackcat@sunflower.com
NEWSLETTER	Jim Cessna AC0KN	jimrcessna@aol.com

REPEATERS & NETS

REPEATER	FREQUENCY	TONE	LOC	MODE	DAY	TIME	NET
W0UK	146.760 MHz	88.5	DCARC	Analog	Sunday Tuesday	20:00 20:00	ARES Net Club Net
N0APJ	147.030 MHz	88.5	Douglas Co				
N0RC	442.000 MHz		Basehor				
K0USY	444.750 MHz	88.5	Lawrence				
K0USY	444.800 MHz	88.5	Lecompton Lawrence				
K0USY	444.825 MHz	88.5	Lecompton	DMR P25 Fusion D-Star			
K0HAM	444.900 MHz	88.5	Linked KS				
W0OQW	147.390 MHz	151.4	Ottawa				



KA0FMZ repeater in Olathe, KS
 147.240/151.4 MHz Repeater in red cabinet.
 4 Large gray duplexers for 2m.
 Duplexers enable the use of 1 antenna for
 receive and transmit at the same time.

MEETINGS

DAY OF WEEK	PLACE	TIME	EVENT
Tuesdays	Dairy Queen 1835 Mass St. Lawrence, Ks.	11:30 am	Lunch
Saturdays	HyVee 4000 W 6 th St. Lawrence, Ks. 66049	8:00 am	Breakfast
2 nd Wednesday	Douglas Co. Fairgrounds 2130 Harper Lawrence, Ks. 66046	7:00-9:00 pm	Club Meeting at Flory Meeting Hall

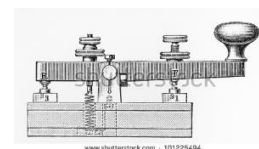
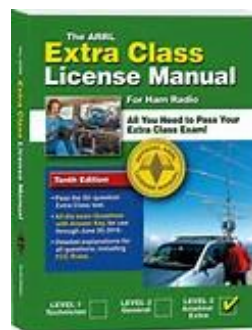
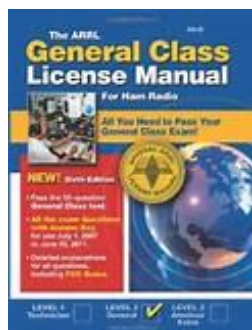
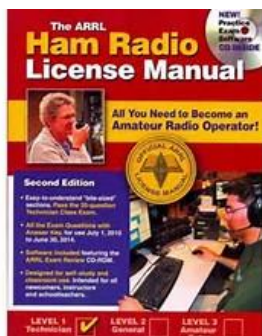


HAM CLASSES

Class Offered:	TBD	
Contact:	Phil Anderson W0IX	w0xiphil@gmail.com
PLACE:	TBD	
SDATE:	TBD	
EDATE:	TBD	
TIME:	TBD	

SCHEDULE

	2018	2019	2020	2021	2022	2023	2024
CW	CW			CW			CW
Ham Class (Jan-Feb)	Tech	Gen	Extra	Tech	Gen	Extra	Tech
Pool Chg. July 31	Gen	Extra	Tech	Gen	Extra	Tech	Gen



CW Not required for license, but lots of fun.

CALL:	
NAME:	
ADDR:	
CITY:	
STATE:	
ZIP:	
PHONE:	
EMAIL:	
COST:	
CHECK/MAIL TO:	DCARC 3916 Bob Billings Pkwy, Lawrence, KS 66049

MEMBERSHIP APPLICATION

Make Check/Mail to:
Douglas County Amateur Radio Club
3916 Bob Billings Pkwy.
Lawrence, KS 66049

DATE: _____ **NEW MEMBER:** ____ **RENEWAL:** ____

CATEGORY	AMT
Regular	\$20
Regular Family	\$30
Senior	\$20
Senior Family	\$25
Student	\$20
Associate	\$15

CALL:	
NAME:	
ADDR:	
CITY:	
STATE:	
ZIP:	
PHONE:	
EMAIL:	



COPYRIGHT

This Newsletter is published monthly by the Douglas County Amateur Radio Club (DCARC). Reprint permission is granted to other Amateur Radio orientated publications for non-copyright material provided that credit is given to the author and source. Copyright articles require permission to use from the holder of the copyright. Opinions expressed herein are not necessarily those of the Club or its officers.

Get Involved ... we help others ... through Ham Radio.

